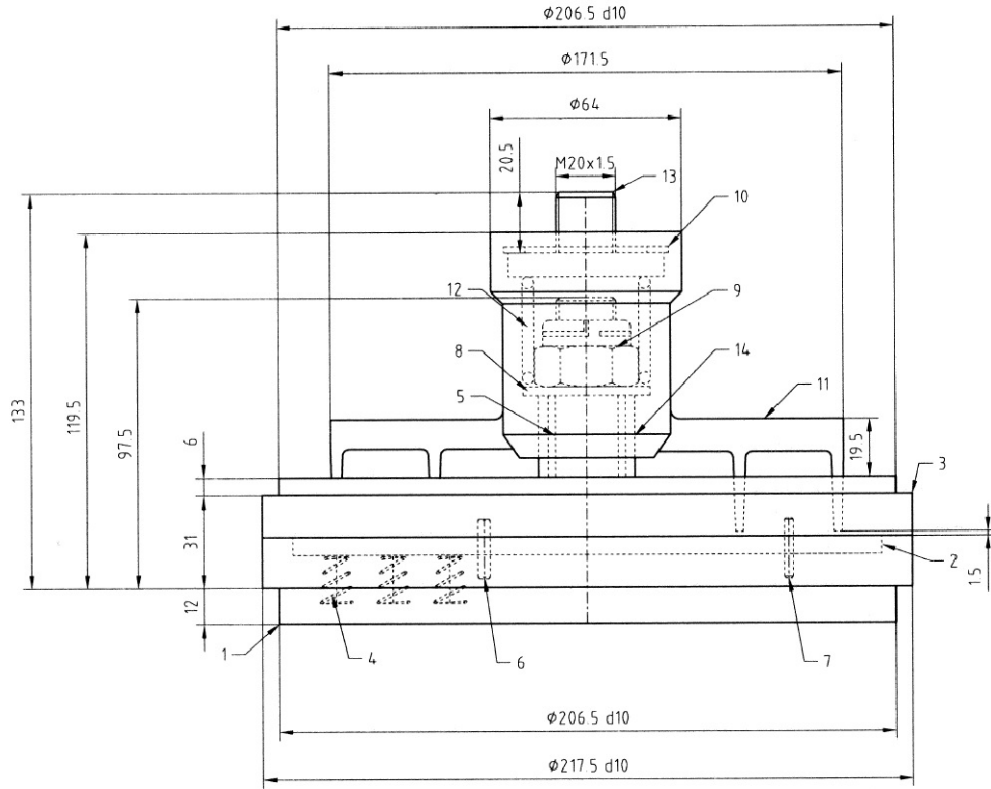
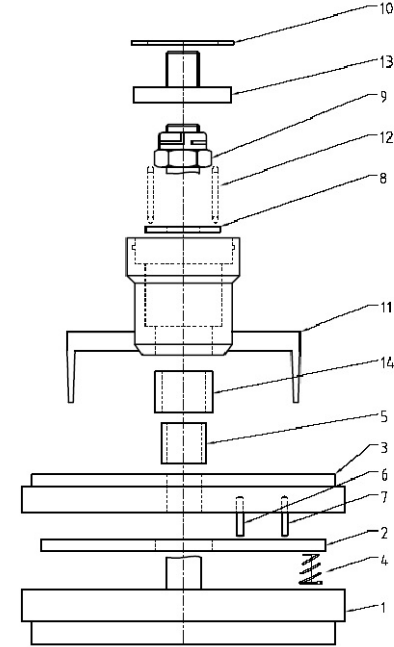


"경고" 본 도면은 광신기계공업(주) 자산이므로 무단으로 복제를 금지하고 타 용도로 사용할 수 없으며, 상기 사항을 위반 시 "부정경쟁위반법", "영업기밀누설죄"로 처벌을 받을 수 있습니다.



SUCTION VALVE ASS'Y

NO.	CODE NO.	PART NAME	MATERIAL		Q'TY	REMARKS
			KS	ASTM		
1		GUARD ASSEMBLY	-	-	4	
-		STUD	STS410	AISI 410	4	
-		GUARD	STS420	AISI 420	4	
-		PIN	STS420	AISI 420	4	
2		PLATE	PEEK	PEEK	4	
3		SEAT	STS420	AISI 420	4	
4		SPRING	STS631	AISI 631	84	
5		METALLIC BUSH	STS420	AISI 420	4	
6		PIN	STS420	AISI 420	8	
7		PIN	STS420	AISI 420	8	
8		WASHER	STS420	AISI 420	4	
9		NUT	STS316	AISI 316	4	
10		SEEGER	STAINLESS STEEL	STAINLESS STEEL	4	
11		FINGER	STS420	AISI 420	4	
12		SPRING	STS316	AISI 316	4	
13		COVER	STS420	AISI 420	4	
14		PLASTIC BUSH	PEEK	PEEK	4	

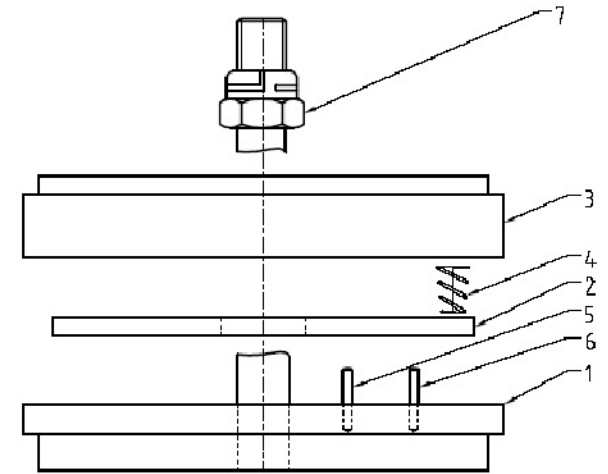
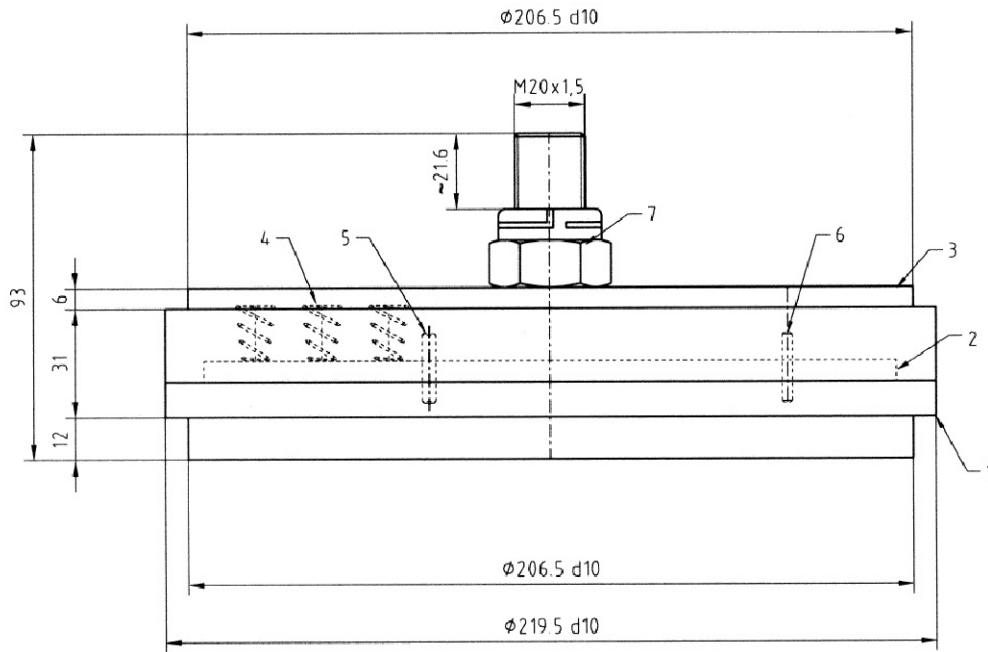


Dependable Compressor
KwangShin KWANGSHIN MACHINE INDUSTRY CO., LTD.

PROJECTION	UNITS	TITLE
	MM INCH	1ST SUCTION VALVE ASS'Y
SHT. NO.	SCALE	DWG. NO.
5/8	N.S.	-

"경고" 본 도면은 광신기계공업(주) 자산이므로 무단으로 복제를 금지하고 타 용도로 사용할 수 없으며, 상기 사항을 위반 시 "부정경쟁위반법", "영업기밀누설죄"로 처벌을 받을 수 있습니다.

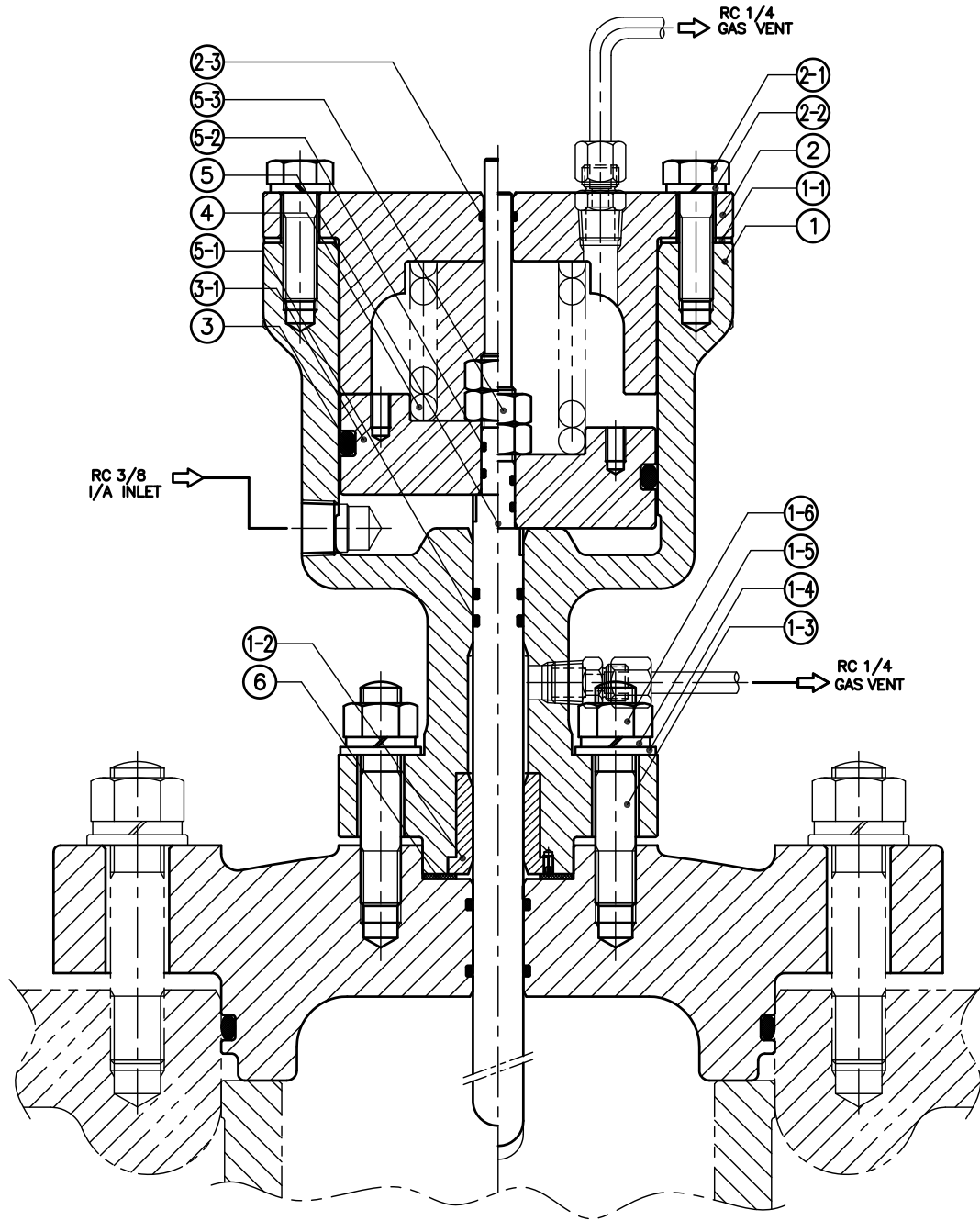
NO.	CODE NO.	PART NAME	MATERIAL		Q'TY	REMARKS
			KS	ASTM		
1		SEAT ASSEMBLY	-	-	4	
-		STUD	STS410	AISI 410	4	
-		SEAT	STS420	AISI 420	4	
-		PIN	STS420	AISI 420	4	
2		PLATE	PEEK	PEEK	4	
3		GUARD	STS420	AISI 420	4	
4		SPRING	STS631	AISI 631	84	
5		PIN	STS420	AISI 420	8	
6		PIN	STS420	AISI 420	8	
7		NUT	STS316	AISI 316	4	



DISCHARGE VALVE ASS'Y

KwangShin		Dependable Compressor		KWANGSHIN MACHINE INDUSTRY CO., LTD.	
PROJECTION	UNITS	TITLE			
	MM INCH	1ST DISCHARGE VALVE ASS'Y			
SHT. NO.	SCALE	DWG. NO.			
6/8	N.S.	-			

"경고" 본 도면은 광신기계공업(주) 자산이므로 무단으로 복제를 금지하고 타 용도로 사용할 수 없으며, 상기 사항을 위반 시 "부정경쟁위반법", "영업기밀누설죄"로 처벌을 받을 수 있습니다.



NO.	CODE NO.	PART NAME	MATERIAL		Q'TY	REMARKS
			KS	ASTM or AISI		
1		DIAPHRAGM BODY	SM45C	AISI 1045	4/4	
1-1		DIAPHRAGM BODY GASKET	NON-ASBESTOS	F104 P1141A	4/4	
1-2		GUIDE BUSH	A6061	A6061	4/4	
1-3		STUD BOLT (M12)	SNB7 (2종)	A193 Gr.B7	16/16	
1-4		PLATE WASHER (M12)	SS400	A283 Gr.C	16/16	
1-5		SPRING WASHER (M12)	SK5	AISI W1-8	16/16	
1-6		HEX NUT	SM45C	AISI 1045	16/16	
2		DIAPHRAGM COVER	SM45C	AISI 1045	4/4	
2-1		HEX BOLT	SM45C	AISI 1045	32/32	
2-2		SPRING WASHER	SK5	AISI W1-8	32/32	
2-3		O-RING	VITON	VITON	4/4	
3		PISTON	C5191B	B139 C51000	4/4	
3-1		O-RING	VITON	VITON	4/4	
4		UNLOADER SPRING	STS304-WPB	A276 Type 304	4/4	
5		UNLOADER STEM ROD	STS304	A276 Type 304	4/4	
5-1		O-RING	VITON	VITON	8/8	
5-2		O-RING	VITON	VITON	8/8	
5-3		UNLOADER STEM NUT	STS	Stainless Steel	8/8	
6		GASKET	A1050P	B209	4/4	
		SET SCREW	STS304	Stainless Steel	4/4	

KwangShin Dependable Compressor
KWANGSHIN MACHINE INDUSTRY CO., LTD.

PROJECTION	UNITS	TITLE
	MM INCH	1ST & 2ND UNLOADER PART ASS'Y
SHT. NO.	SCALE	DWG. NO.
3/8	1:1.5	AS-13-01-002

A3 (297x420mm) CAD NO. : AS-13-01-01A